

The New London Plan



Mayoral statutory strategies

- London Plan
- London Housing Strategy
- Mayor's Transport Strategy
- Economic Development Strategy
- London Environment Strategy
- Health Inequalities Strategy
- Cultural Strategy



MAYOR OF LONDON



London Housing Strategy

DRAFT FOR PUBLIC CONSULTATION

September 2017



The new London Plan

This new London Plan marks a break with previous London Plans, represents a step-change in our approach and serves as a blueprint for the future development and sustainable, inclusive growth of our city.



Good Growth policies

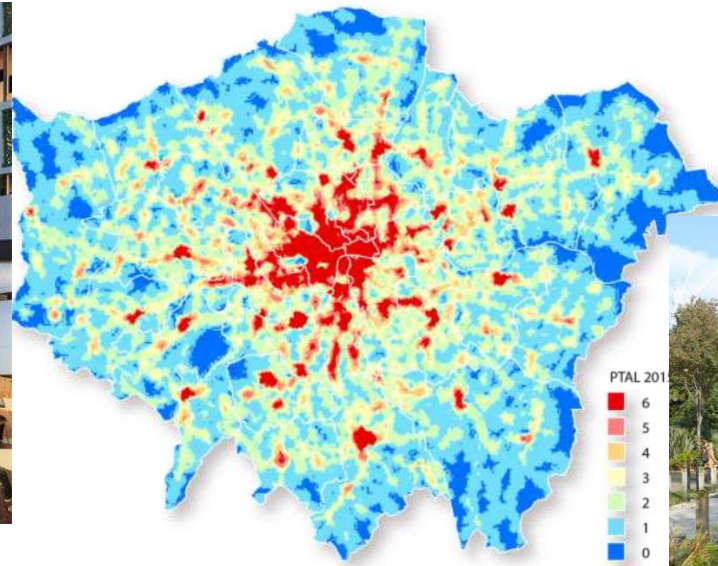
1. Building strong and inclusive communities
2. Making the best use of land
3. Creating a healthy city
4. Delivering the homes Londoners need
5. Growing a good economy
6. Increasing efficiency and resilience



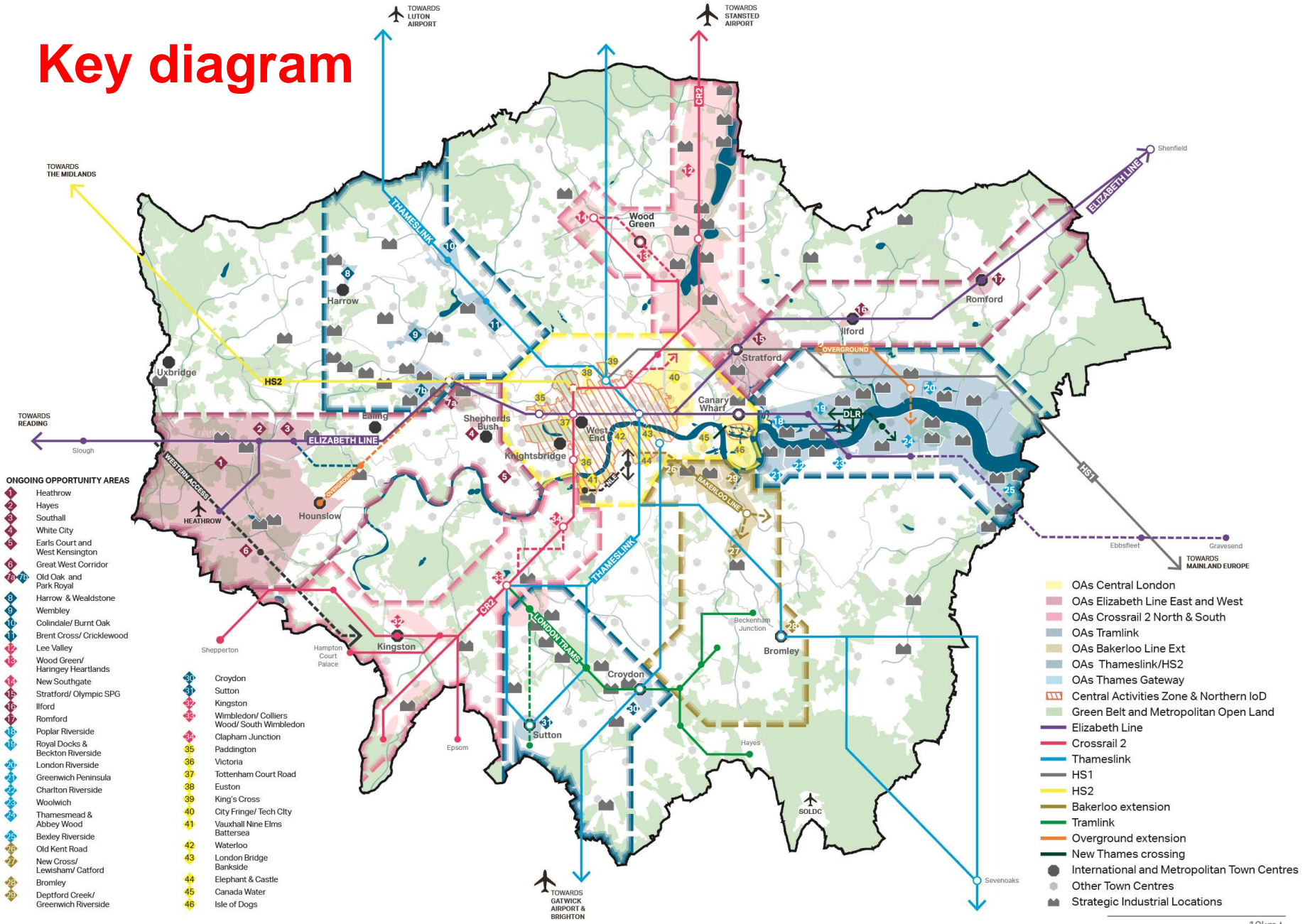
I. Building strong and inclusive communities



2. Making best use of land



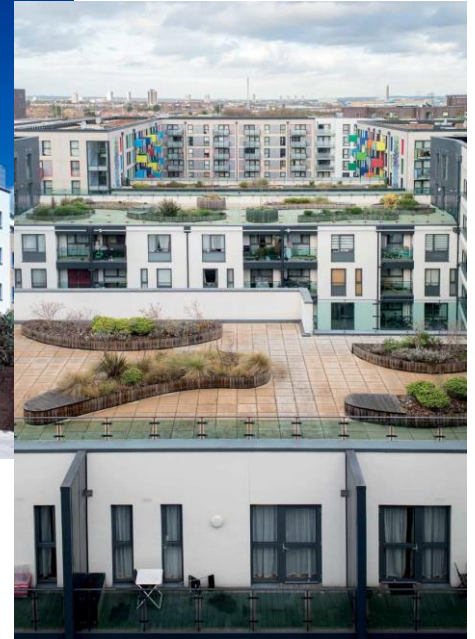
Key diagram



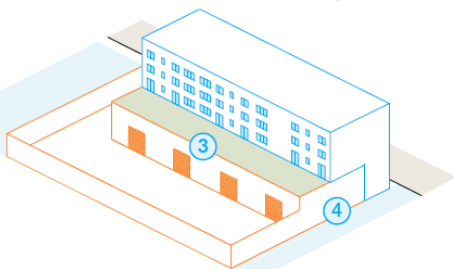
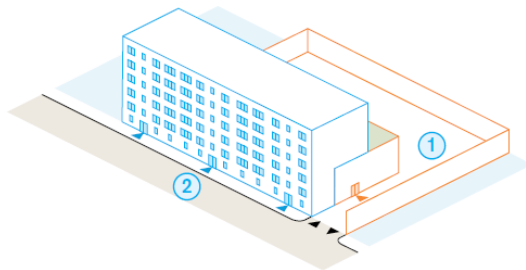
3. Creating a healthy city



4. Delivering the homes Londoners need



5. Growing a good economy



- Residential
- Industrial
- Other site
- ▶ Residential access
- ▶ Industrial access
- ▶ Loading



6. Increasing efficiency and resilience



Making it happen

MAYOR OF LONDON

HOMES FOR LONDONERS

AFFORDABLE HOUSING AND VIABILITY
SUPPLEMENTARY PLANNING GUIDANCE 2017

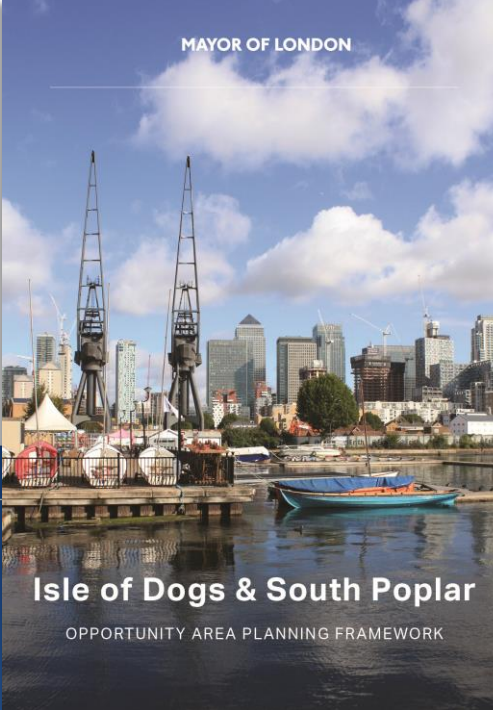


AUGUST 2017

MAYOR OF LONDON

INDUSTRIAL INTENSIFICATION PRIMER


MAYOR OF LONDON



Isle of Dogs & South Poplar

OPPORTUNITY AREA PLANNING FRAMEWORK

MAYOR OF LONDON



CENTRAL ACTIVITIES ZONE SUPPLEMENTARY PLANNING GUIDANCE

MARCH 2016

LONDON PLAN 2016
IMPLEMENTATION FRAMEWORK



The New London Plan Timetable

TIMETABLE

- 1st December 2017 -2 March 2018
Draft London Plan consultation
- Autumn 2018:
Examination in public (EiP)
- Autumn 2019:
Publication (adoption)